

The Gillian Purvis Trust

11 Rosslyn Terrace, Glasgow G12 9NA · tel 0141 334 4114 · info@gillianpurvistrust.org · www.gillianpurvistrust.org

NEWSLETTER No.1 SEPTEMBER 2004

A lot of positive things have happened over the past nine months since the Trust was first mooted by Toby. Turn to the back page and you will appreciate the original inspiration for this newsletter for Gillian's Trust. Inspiring activity indeed by many of Gillian's colleagues at the SECC. To them a big 'thank you' for an impressive and early response to help the Trust.

ALSO RUNNING FOR GILLIAN

Congratulations also to Caroline Kirsop for her individual endeavour in running the Glasgow Women's 10K in May and achieving a magnificent level of sponsorship for the Trust.



THE TREE

Gillian's much visited tree, planted in February in Kelvingrove Park, blossomed in its first year. The spring flowers flourished beneath it and Gillian's birthday on 23 August was remembered, not only with personal posies at its foot but also with the planting of autumn crocuses and winter aconites which we hope will be making an appearance soon.



MEET PHOEBE GILLIAN
The sadness of the day on 23 August, Gillian's birthday, was completely turned around by the joyous news that Phoebe Gillian was born that afternoon to Hazel, Gillian's sister. Welcome to Phoebe and many congratulations to Hazel and Bevan.

Sally's new daughter, Bo, is another happy addition to Gillian's family. Gillian had not met her but on receiving photos she had, on her last day, forwarded copies to her parents, Jim & Libby.



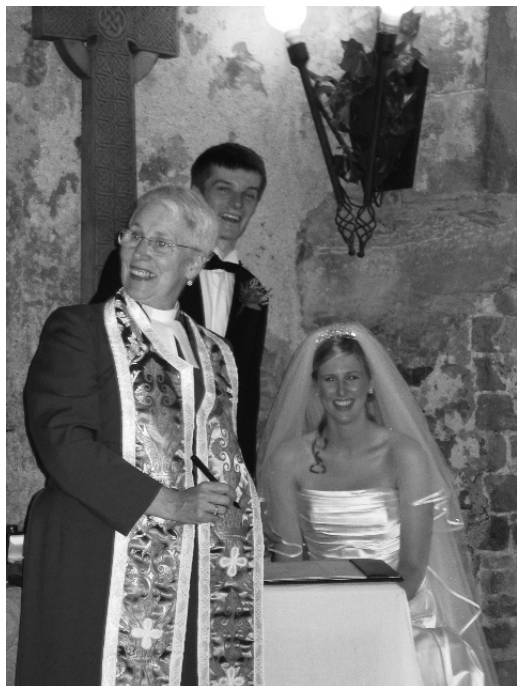
EXPLODED PLAN

The Show for Gillian

Gillian had been looking forward to the opening night in mid-February of a solo exhibition by Toby at Sutton Lane Gallery in London. This show, inevitably postponed, opened in late May, an especially personal achievement for Toby who knew this one was "for Gillian" – the show was dedicated to her. This sentiment was marked also by a quiet visit to the show by Jim & Libby, Gillian's parents and Sally, her Aunt later in June. Thanks from Toby to Gil and Sabine at the Gallery and to Dougie Payne, turned artist assistant and landlord!

THE KENNEDY WEDDING

Friends of Toby and Gillian, Colin and Caroline Kennedy were married at Dundas Castle on 16 July and celebrated magnificently. Unusually for this summer, the sun shone on the wedding party, enabling photographs not just of the happy new Kennedys, but of the great historic gathering of the



skateboard clan, some from as far afield as USA and Australia. In the midst of their busy-ness in planning the wedding Colin and Caroline remembered Gillian and we are thrilled at the response from wedding guests to their generous gesture to make donations to the Trust as a wedding present to them both. Thank you to those who have helped in this way and to Colin and Caroline.

SECC BOOK OF MEMORIES

Gillian's family, and Toby's too, have been especially moved by a book compiled by Gillian's work colleagues of touching, funny, happy memories, including images and drawings, of her life with them at SECC (The Scottish Exhibition and Conference Centre). Even her Taekwondo badge is included (she, along with Hazel, had achieved black belt status last year). Her smile is the recurring predominant theme throughout the memories recorded; the perfect way to remember Gillian, along with that occasionally arched eyebrow!

SECC MEMORIAL

The SECC has been moved to mark Gillian's contribution over her seven years there with a permanent memorial. Funding has been made available for this purpose and Toby has accepted the commission to undertake a piece of work which will provide a special space for all who knew Gillian to remember her. The Trust will keep you informed.

SECRETS OF GILLIAN'S DESK REVEALED

By all accounts Gillian's work space was very orderly and yet her desk revealed a few interesting artifacts.

On first discovering Toby was a skateboarder, she boasted of her own skateboard and this (believed to have been the spoils from a Christmas raffle) has been retrieved from beneath her desk and presented to Toby. A classic red polyprop, he plans to mount it over a doorway in his new flat.

There were a few tales surrounding a bottle of crème de cassis secreted in a desk drawer – another Christmas leftover? This continued to be enjoyed over this summer, translated into “Gillian's pudding” – a salad of strawberries, blueberries and physalis (cape gooseberries) drenched in cassis, served with icecream. We are told Gillian would have loved this!

WHAT NEXT?

We hear news of benefit gigs for Gillian. Top Glasgow bands Pro Forma, fuck off machete and Correcto, plus Stiletto DJs plan to play a benefit gig by the end of the year, date and venue to be confirmed. Watch out for news on the Trust website.

More races are to be run for the Trust and even more initiatives to assist the Trust would be welcomed.

Meantime, the business of the Trust is underway and the Trustees are working towards making the first Gillian Purvis Award.

THANKS are due to so many and here are mentioned a few specific supporters of the Trust, whilst acknowledging many others who have helped at all levels over the past nine months:

SARAH LOWNDES not only had the inspiration for the tree in Kelvingrove Park, but made all the arrangements for its planting

THE PARKS DEPARTMENT of Glasgow City Council donated the tree and Callum Black and his colleagues cooperated with total support and sympathy

ROBERT JOHNSTON provided the graphic design and his patience with the Secretary/Treasurer is gratefully acknowledged

COLIN HARDIE, NATASHA NORAMLY and colleagues at SIMBIOTIC have enabled the email, web and pay-on-line facility

ANDY MUSHET of WILLIAM ANDERSON'S provided total sponsorship of the printing of the Trust leaflet

JEREMY & LENA of ARMITAGE ASSOCIATES bought the stamps for the extensive initial mailing

INLAND REVENUE – yes – gave helpful advice and efficient administration in granting charitable status for the Trust

THE SECC RUNNERS and CAROLINE KIRSOP for fundraising

Apart from the collection taken at the service in February, some donors could not wait for the official launch of the Trust, helping to make it possible to make a significant award in the first year:

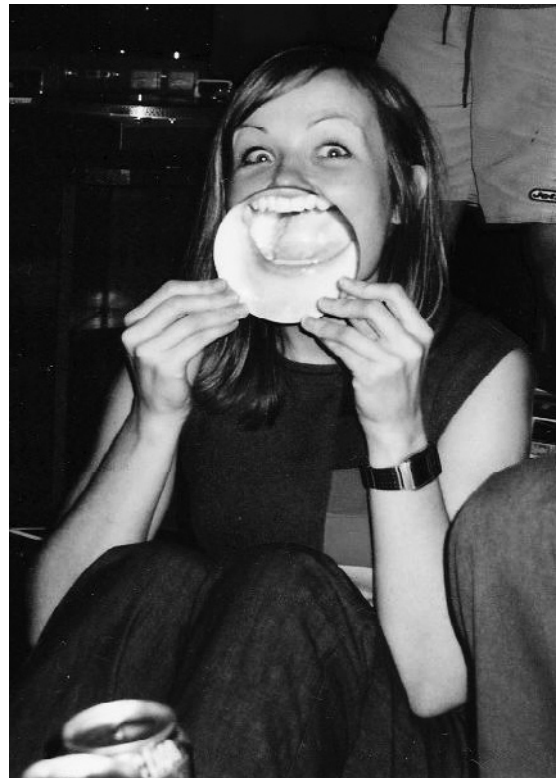
JOAN ALEXANDER
DAVID & JENNIFER BANKIER
STEVEN HAMPSON
COLIN & CAROLINE KENNEDY
RON McCONNELL
HAMISH & LIZZIE MILLAR
PAULINE MILLER & RUSS HALL
SCOTT PALMER AND RACHEL WADSWORTH
ANON

There were others who came forward to donate and who were deterred (!) until charitable status was in place for the Trust. Please come back! We are ready to boost the fund with your contribution which can now be enhanced by reclaiming tax.

DEDICATIONS TO GILLIAN IN PRINT
“Social Sculpture” by Sarah Lowndes was published in June, a social history of the artistic scene in Glasgow created by writers, performers, musicians and visual artists over the past 30 years. Sarah dedicated the book to Gillian.

King Pin, an international glossy skateboard magazine features a major article this month about Colin Kennedy, professional skater. Colin has dedicated this piece to Gillian.

Whilst this newsletter may not be of the quality Gillian would have produced, I hope it is received in the spirit in which it is presented. If you have found it worth scanning and have copy or a message for a future issue, please contact the Secretary of the Trust.



S.E.C.C. Ladies 10 K



Lilias

Isabella



Caren



Marion

Brenda

Grace

Donna



Diane

Kathleen

Liz

Sam

Liz

Audrey

**Total Money Raised For
The Gillian Purvis Trust Fund
£735.55**