

# The Gillian Purvis Trust

NEWSLETTER No.3 MARCH 2006



## **REFLECTIVE WORK FROM CATHERINE AITKEN**

The 2006 Gillian Purvis Award to a 4th Year Textile Student at Glasgow School of Art was awarded to Catherine Aitken. Catherine plans to use the Award, increased this year to £750, to support her final year's work, including the high cost of digital printing, allowing the opportunity to combine digital and hand printing techniques with a greater freedom of scale, and ultimately to mount her degree show. Catherine also welcomes the chance to buy some high quality fabrics with which to work.



Above, L-R: Toby with Catherine at the Award Presentation; Phoebe enjoying the exhibition!

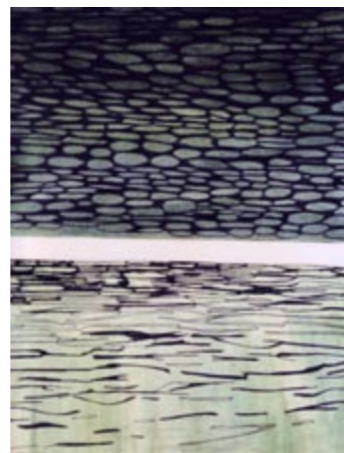
Toby presented Catherine with The Gillian Purvis Award on 16 January at the preview of 'Upstairs Downstairs', a show of work by third year Textile students at Glasgow School of Art. Colleagues and students in the Textile Department were delighted to welcome many donors to the Trust, and most especially, Gillian's parents Jim and Libby, sister Hazel and niece Phoebe.

Over the past year, Catherine's work has been primarily concerned with the exploration of screen-printing techniques which has broadened to include the use of digital print. The combination of both techniques provide the opportunity to produce fabrics which benefit from the complexity of image available through digital methods, whilst also maintaining the depth and personality of hand printed approaches. The relevance of this combination was evident after research in Copenhagen centred on the relationship between water, light and reflection. The harbour in Copenhagen provided the inspiration through photography and drawing to realise the potential of such an environment translated to fabric. Back in Glasgow, research focused on the Forth and Clyde canal. Whilst printed textiles are Catherine's predominant interest, she also enjoys embroidery which she hopes she might include in her work.

Visit the Glasgow School of Art at the end of June and see Catherine's Degree Show, along with the wealth of exciting work created by students in the full range of textile disciplines, print, knit, weave and embroidery, as well as Degree Shows in all departments of Fine Art, Design and Architecture.



Left, right and opposite: works and studies by Catherine Aitken



#### MORE AWARDS TO BE ANNOUNCED

Toby spoke of the rewarding success of the Trust and was pleased to give notice of The Gillian Purvis Award for Primary Research; £500 to be presented in May this year to a third year textile student at Glasgow School of Art, for assistance with travel for research towards work in fourth year. Toby also hinted at additional awards to be made in the future. Watch the website for more news.

#### THE PROGRESS OF SCOTT KYLE

The first beneficiary of the Trust, Scott Kyle, excelled in his final year at Glasgow School of Art achieving a First Class BA Hons Degree. His degree show, which many of you managed to visit, was outstanding. Viewers were immediately drawn to Scott's presentation, the bold colour, the flourishing design, the intricacy of his very fine embroidery and the enhancing sparkle provided by the Swarovski sponsorship. It was much appreciated that the Gillian Purvis Trust was credited at his display for the support Scott had received.

#### SCOTT'S RECENT WORK AT CENTRAL ST MARTIN'S

Scott earned a place, which he took up in October on the Masters Course in Fashion at Central St Martin's College of Art & Design in London. Tough, competitive, pushy, just some of the words Scott used to describe the experience on the course, which he also said was going very well and he was really enjoying it. Scott, still focusing on his embroidery, is in discussion again with Swarovski and he is interested in returning to heavy beadwork. With another year to go, Scott is relishing his time on the course and in London. GSA seems a world away but he did say he was missing them all!

#### MUTUAL TRUST - VISIT THE NEW EXTENDED WEBSITE AT WWW.GILLIANPURVISTRUST.ORG

On hearing of the origins and the aims of the Trust, the Trustees of The Stanley Morrison Trust invited an application from The Gillian Purvis Trust and granted £1,000 to enable the Gillian Purvis Trust to undertake a much needed upgrade and significant development of the website. After initial help from Robert Johnston, Colin Hardie and colleagues of Ubian have done a marvellous job in creating this new-look and extensive website. Ubian has also partly sponsored this project. Whilst Newsletters will continue to be sent on occasion, the website provides an ideal vehicle for communicating Trust news on a regular basis. Go see it.

#### SECC MEMORIAL

You may remember from the first Newsletter that SECC had generously set aside a fund for a permanent memorial to Gillian on the site of a garden area at SECC near the office in which she worked. Toby was delighted to be invited to be personally involved in producing this work. Determined to create an appropriate memorial, this has not been an easy task for Toby to contemplate. Plans are now developing and it's hoped that 2006 will see progress towards this important installation.

Somehow it seems apt that in the coming months Toby will be working just across the Clyde as the lead artist at the new headquarters of BBC Scotland at Pacific Quay.

Below: works by Scott Kyle



Libby with granddaughter Phoebe enjoying the Dunblane Coffee Morning

#### DUNBLANE COFFEE MORNING

No-one envisaged that the coffee morning Elizabeth (Libby) – Gillian's mother – was organising with friends in Dunblane would turn out to be on such a scale as it was. Fortunately, it was a dry June Saturday, so that the dozens and dozens of friends and family attending could pour into the beautiful garden of Gerry Goddard's house which she had so generously offered for the occasion. Much fine baking was consumed and a constant stream of coffee flowed. It was a happy gathering, especially for Jim, Libby and family. As for the Trust, it benefited from donations and a splendid raffle, gaining well over £1000. Thank you to coffeemakers, bakers, prize donors and to all who came along.

#### DUNBLANE COFFEE MORNING NO.2

The Trust was delighted to receive a donation, the proceeds of a coffee morning at St Blane's Church, which Gillian's parents had attended when they lived in

Dunblane. Many thanks to all concerned who organised and contributed.

#### KEEP ON RUNNING

Yet more miles were covered for the Trust in 2005. Some of Gillian's colleagues from SECC and Elizabeth Robertson, Aille Quinn (first-time runner) and Janie Nicoll all donned their running shoes for various marathon events and the miles they clocked up earned the Trust more than £600.

#### MORE MUSIC IN LONDON FOR THE TRUST

Inspired by the success of the piano recitals by Ken MacKinnon in London, reported in the last Newsletter, boyfriend of Jenny Baylis, another Toby, arranged an acoustic evening in his local pub in London and donations from listeners and players raised a further £175 for the Trust. Thanks to all especially to Jenny and 'her' Toby, for this support from London.

### REMEMBERED AT CHRISTMAS

For the second year running, Gillian's workplace, the SECC, remembered her at Christmas, not only by donating £500 to 'her' Trust instead of spending on Christmas cards but also by contributing to an Oxfam water project, identified as one that Gillian might herself have chosen to support.

Lesley Booth of New Century PR, as in 2004, notified clients of a donation welcomed by the Trust in lieu of cards.

### AND THE HELP KEEPS COMING

Trustees were delighted to hear of a thoughtful gesture from an applicant for the first Gillian Purvis Award. Noreen Bissland who graduated from the Textile Department at GSA in 2005, has offered a shawl from her collection. The Trust will announce in due course how this and other previously reported pieces of work offered will benefit the Trust.

### HOW YOUR DONATIONS ARE HANDLED

First and foremost, in this climate of rigorous accounting demands on charities, the Trust has been extremely fortunate in benefiting from the services of Campbell Dallas who have provided sound advice and guidance and audited the accounts for the first year of the Trust. This has been undertaken on a complimentary basis in the spirit of making a contribution to the Trust. The Trustees are indeed extremely grateful for the valuable help and expertise received. Particular thanks go to Bob Dallas and Alex Johnston for their support. Copies of the audited accounts are available on request, email [info@gillianpurvistrust.org](mailto:info@gillianpurvistrust.org) or call 0141 334 4114.

**DONATIONS**, both continuing and new since the last newsletter in May 2005 have been received from:

S Airth, Sarah Aldred, Joan Alexander, Jeremy & Lena Armitage, Jenny Baylis, Ron & Anne Beaton, B Black, Len Boxill, Louise Brady, M E Brown, Gary Browne, Gillian Buchanan, Fiona Carrick-Anderson, Gordon & Rosemary Cox, Dr I A Crowther, Bob Dallas, Sorcha Dallas, Damasquine Art Gallery, JK Donnelly, Jenny Downie, Blaise Drummond, Leigh Ferguson, Donald & Liz Gemmell, Miss Gerry Goddard, Steven Hampson, Anna Johnston, Joan Johnston, Anne-Louise Kieran, Alastair Kidd, Mrs Margaret Lawn, Ken & Christine Logan, Jean McCrindle, Christine McGeoch, Mrs J McGlinchey, Miss Moira McNaught, Alex Mitchell, Louise Mitchell, The Modern Institute, New Century PR, Janie Nicoll, Mr & Mrs Ogden, Fraser Paterson, Sam Paterson, Jim & Libby Purvis, Aille Quinn, Andy & Ruth Rae, Reid, Elizabeth Robertson, Mrs F Ross-Watt, F I J Schlopper, SECC runners, SECC, Fiona Shearer, Jim & Jennifer Shearer, Fred Shedden, Ben Spencer, Jim Smith, Stanley Morrison Trust, St Blane's Church Dunblane, Cindy Sughrue, Joanne Tatham & Tom

O'Sullivan, A & E Thomson, Jean E Thomson, Mrs Ann Walford, Rhona Warwick, Margaret Watson, Toby Webster Ltd, Kevin & Jean Williams, Rory & Julie Williams, D Wilson, I Wright.

**THANKS** are due also to The Copy & Print Shop in Gibson Street Glasgow for help in printing Newsletter 2 and to Minuteman Press in Somerset Place, Glasgow, for this edition; to Keith Bruce of The Herald and to The West End Mail for coverage of the recent Award to Catherine Aitken and to Friends of Kelvingrove and Royston Hill for profiling the Trust in their Newsletters.

It is regretted that it is not possible to acknowledge by name everyone who has assisted the Trust in many different ways. Please be assured that your support is very much appreciated. It is hoped that all who have donated in any way at all will take pleasure from the resulting ability of the Trust to provide help to a growing list of students in the creative arts in Glasgow.

Gillian in Zurich, 2002



### THE TREE

The tree in Kelvingrove Park continues to give pleasure to family and friends. Whilst there has been some disappointment that the squirrels have disturbed the bulbs planted around it, there is a feeling that Gillian would have smiled at this. In the summer time the location of the tree attracts gatherings of small children from the local nursery schools and although sometimes the flowers struggle in their wake and the grass is well trampled this, too, does not seem inappropriate. The snowdrops, while appearing delicate, will resist this treatment and will surely continue to give a good show year on year, as will many of the spring flowers. The tree itself, meantime, flourishes and we look forward again to its springtime blossoms. The Park gardeners are very attentive in caring for the space around the tree and do their best to defy the squirrels by regularly replanting the bulbs!

## THE TREE IMAGINED

“Gillian’s Tree”: Blaise Drummond, long-time artist friend of Toby’s from Ballymahon in County Longford, had fond memories of meeting Gillian with Toby when he and his wife Siabhra last visited Glasgow. Not having seen the tree in Kelvingrove Park, Blaise understood it to be an important and appropriate symbol for remembering Gillian, and he was inspired to create his own image of it. The painting was included in a solo show in Damasquine Art Gallery in Brussels last year. It was the first painting to be sold from the show. The proceeds of £1,440, including the Gallery’s commission, have been donated to the Trust. Sincere thanks to Blaise and to Damasquine Gallery for this considerate and considerable contribution which will help many students in creative fields in future.



The Gillian Purvis Trust, 11 Rosslyn Terrace, Glasgow G12 9NA tel 0141 334 4114 info@gillianpurvistrust.org www.gillianpurvistrust.org  
Trustees: Robert Johnston, Sarah Lowndes, Toby Paterson (Chairman), Hazel Quinn, Sally Swadel, Anne Ward. Secretary/Treasurer: Lesley Paterson